

BarTender® 2022 is built to enable secure, anywhere, anytime printing for any business, and provides new, expanded resources for integration in enterprise environments.

- Print anywhere, at any time, on any operating system with Print Portal
- Easily connect labeling and enterprise data with our SAP HANA database connector
- Print faster with the newly redesigned Print Station, offering streamlined operations and improved performance
- Seamlessly integrate label printing with web applications using the BarTender REST API



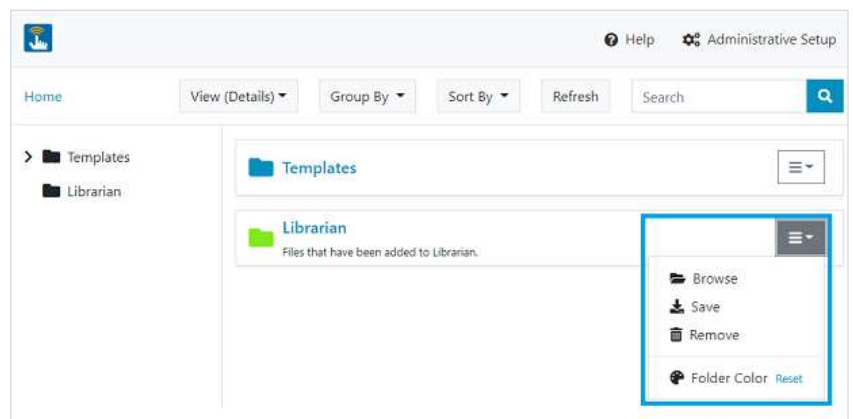
New BarTender REST API

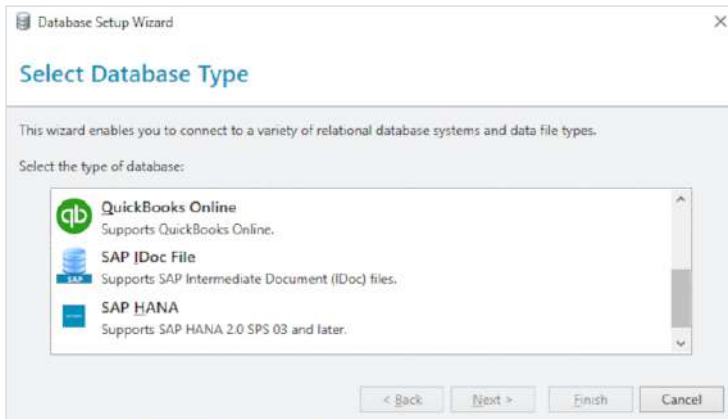
- Access an extensive set of BarTender actions via a RESTful web-service API to automate label printing
- Integrate BarTender and enterprise applications with scripting formats such as YAML and JSON
- Quickly understand how to use the BarTender REST API through OpenAPI documentation

Expanded access to remote printing with Print Portal

(Now available in Professional, Automation and Enterprise Editions)

- Find, select and print labels from any device in an instant, via web browser
- Define custom folder images and colors to make documents and labels simple to locate
- Create and manage more detailed user permissions with expanded, more in-depth administrator controls
- Find and set security and advanced properties on all-new property pages, designed with user experience in mind



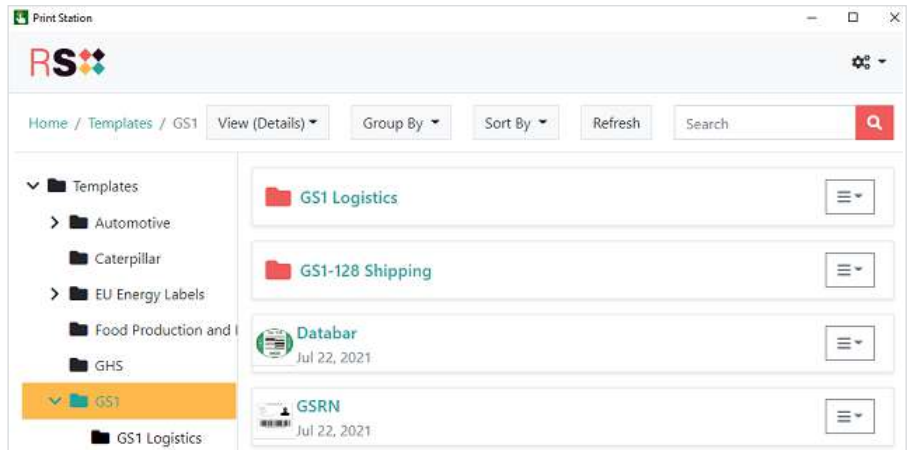


New SAP HANA database connector

- Connect labeling directly with your data stored in SAP HANA
- Access SAP HANA in the cloud or via on-premises instances
- Support for SAP HANA 2.0 SPS 03 and later Versions

Redesigned Print Station

- Point and click printing: quickly locate and open documents, select printers, enter data and print using Print Station's new, intuitive modern user interface — new grouping and sorting options to help print operators work more efficiently
- Customize the branding of Print Station with your own logos and color schemes to integrate BarTender more seamlessly into your print environment
- Use Print Station to access and advance files through workflow states, and review and approve BarTender documents for production (Enterprise Edition)







For more information, please visit us on

<https://www.barcodes.com.au/bartender-barcode-labelling-software-professional-edition-2022/> or call us on 1300 800 999

Key enhancements by edition

BarTender 2022's enhancements are available in the following BarTender editions:

 STARTER EDITION	 PROFESSIONAL EDITION	 AUTOMATION EDITION	 ENTERPRISE EDITION
<ul style="list-style-type: none">No changes	<ul style="list-style-type: none">Includes all Starter Edition featuresPrint PortalSAP HANA database connector along with support for over 20 other data sourcesRedesigned Print Station	<ul style="list-style-type: none">Includes all Professional Edition featuresBarTender REST API	<ul style="list-style-type: none">Includes all Automation Edition featuresIntegrated Librarian and workflow support for Print PortalFull user and access security support for Print PortalCentralized logging and full audit trail support for Print Portal

System requirements

Operating system

- Windows 10 and 11
- Windows Server 2022, 2019 and 2016
- 64-bit (x64) editions
- An active internet connection may be required to install Windows updates.

Hard disk and memory (*minimum)

Complete BarTender Suite utilization (64-bit)

- Memory: 8 GB RAM
- Hard drive: 20 GB (to allow sufficient space for logs)

Display resolution

- 1024 x 768 (minimum)
- 1920 x 1080 or better (recommended)

.NET Framework

- .NET Framework 4.7.2 or later version is required
- The BarTender installer will automatically install all required .NET Framework components
- An active internet connection may be required to update .NET framework

Database

- BarTender System Database, Librarian, History Explorer, and Reprint Console require Microsoft SQL Server 2012 or higher (Express or Full edition)

*(Recommended system specifications will vary based on the specific details of each installation)