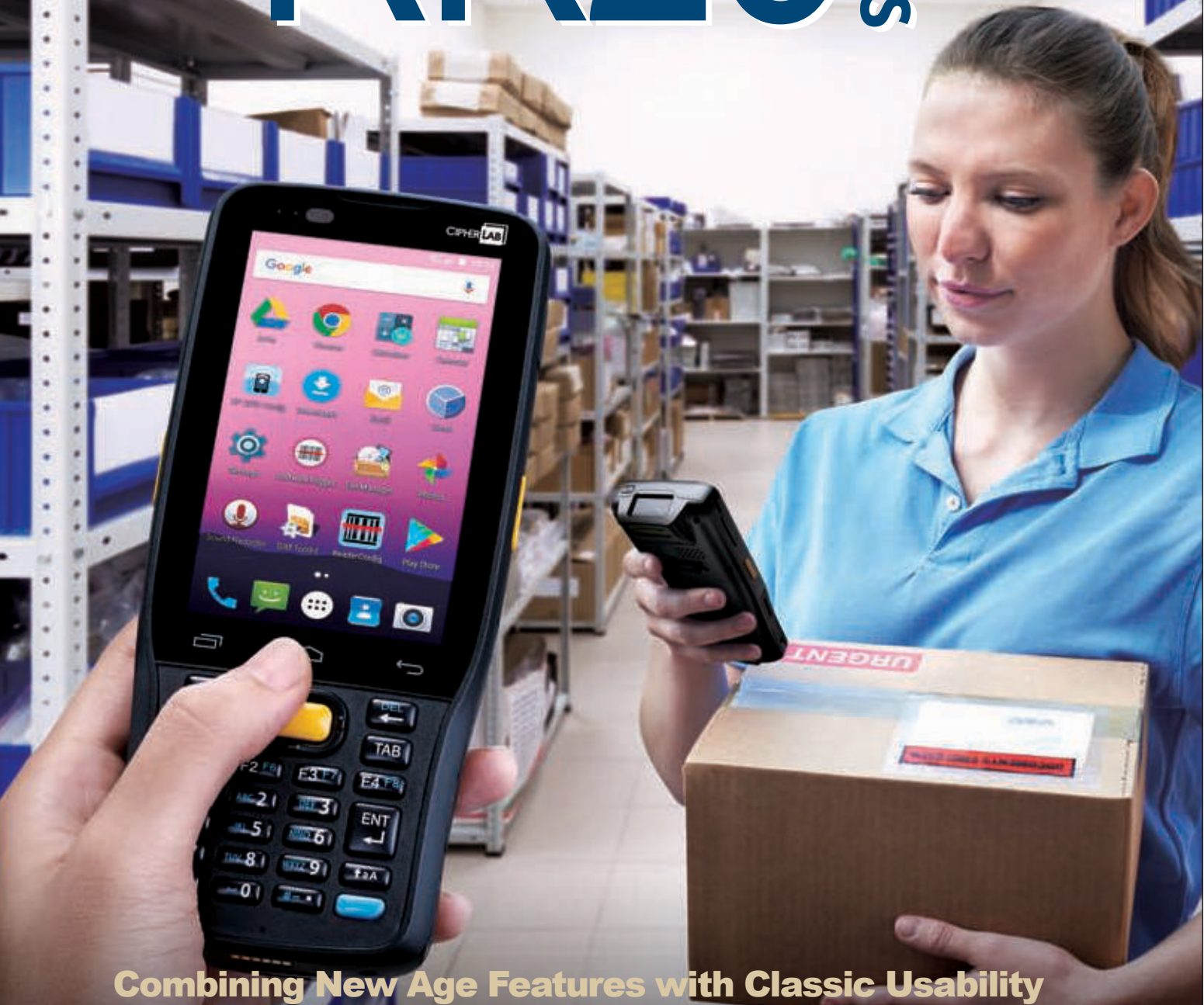


RK25 series



Combining New Age Features with Classic Usability

Keeping up with the trend of Android mobile computers, CipherLab has been pushing boundaries to continuously update mobile data collection functions. As more users start to adopt the Android mobile computers, more features to satisfy various user behaviors are in higher demand. Crafted with operation-friendly designs, up-to-date features, powerful wireless options and versatile data capture functionality, the CipherLab RK25 mobile computer creates a perfect blend of new age features and classic usability to maximize your enterprise's usability.



RK25 series

Rugged Mobile Computer

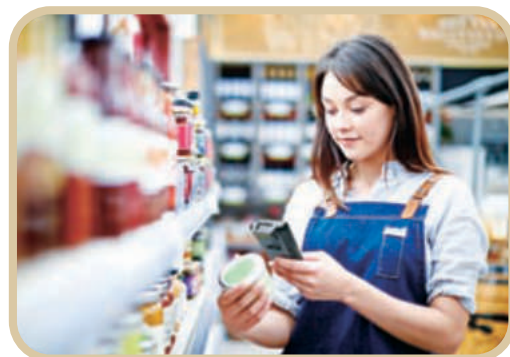
Up-to-date Features for Big Volume Data Collection

As extensions from commercial smartphone, the RK25's Android operating system has a large display with management android apps that is easy to operate with simple numeric keypad. CipherLab's RK25 comes with 2 physical keypad designs for users to choose from. The physical buttons allow users to feel and press the buttons easily for faster data entry with higher accuracy, even during non-visual data entry applications which requires users to read off and simultaneously enter in data. Built for users in the retailing, light warehousing and field mobility industries, it fulfills the most diverse user behaviors in any environment with big volume data collection demands. The RK25 mobile computer effortlessly combines the benefits of touch computers with handheld terminals into one reliable device.



Big Display and Friendly Operation Design

With large and easy to use buttons, RK25 is made to best suit your specific preferences. Its 4" display with multi-touch panel has auto-adjustable backlight and sunlight visibility to ensure readability in all environments. Its 10 degree reading angle makes on-screen data checking simple by allowing users to read barcodes without laying the RK25 flat. Moreover, its compact 292 g, curved grip design reduces extended usage fatigue while delivering comfortable one-hand operation. Your staff will be able to extend their productivity to the fullest with RK25's friendly operation design.



Enterprise Usability with Updated Advancements

CipherLab RK25 is equipped with the latest quad-core 1.4 GHz processor and 2 GB RAM. Any complicated job process is immediately simplified with its high speed performance and smooth operation. Through its Micro SDHC card slot, the RK25's sample 16 GB memory is expandable to 32 GB so data-intensive applications can run smoothly. Android 7 Nougat with GMS certification allows the RK25 to meet enterprise security standards while supporting all Google official API including Google Play, G-mail and Google Map, significantly increasing your business' mobility.

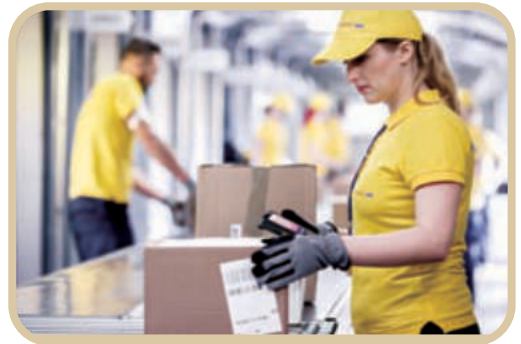


Trustworthy Wi-Fi and Real-time Communication

The RK25's Wi-Fi transmission (IEEE802.11 a/b/g/n/ac) of dual band and fast roaming is the true definition of dependability in data-intensive environments such as warehouses. Furthermore, RK25's 4G/LTE can facilitate large file transmissions with high speed such as video streaming and remote access to back-end systems. Drive time is reduced with built-in GPS, GLONASS, Beidou and AGPS, providing the most accurate navigation. Communication among workers is kept at the most efficient level with instant voice connection, VoLTE with high definition voice or VoIP (PTT) with noise cancellation. With a simple touch of a button, instant communication between staffs is accomplished.

Durability to Support Harsh Environments

The CipherLab RK25's IP65, 1.5 m drop resistance and 300 tumbles at 0.5 m help support continuous work in rainy and dusty environment while fully protected against accidental drops. You don't have to worry about scratching the screen with the help of Corning Gorilla Glass 3. The keypad's numbers and letters have been inked with technology that won't fade with heavy usage. Moreover, it passed the durability test of one million keystrokes. On top of that, the 4000 mAh swappable battery keeps the durable productivity going for long shifts in any environment.



Resourceful Data Capture

CipherLab's RK25 offers reader versatility with linear imager, 2D imager and mid-range 2D imager, giving you long distance barcode reading capabilities over 4 m. Additionally, video and image capture is made simple with RK25's optional 8 MP camera. RK25's ability to support NFC applications of peer-to-peer and card emulation mode enables it to automate identification verification and eliminate the need of security key cards.



A Complete set of Utilities and Software

Compatible with various self-owned and 3rd party software, including SOTI and Wavelink (Ivanti), the RK25 provides simple device deployment and management.

With CipherLab **Wireless Mobile Deployment System (WMDS)**, setup and synchronization is made easy. Users may efficiently deploy device configuration settings to a large number of devices. It also allows your staff to backup configuration with one click deployment, as well as duplicate device settings for different operating systems.



CipherLab Terminal Emulation supports systems of TN5250, TN3270 and VT100/102/220/ANSI with full screen operation for efficient inventory management. Your business will undoubtedly save time and energy with a full-screen operation where the intuitive user interface, Wi-Fi status, battery capacity, custom font size/color and more are available at your staff's disposal. Also, **Button Assignment** speeds up the work process by allowing function key configuration.



CipherLab BarcodeToSetting creates user-friendly setup process, significantly shortening user's device setup time. Users may utilize StageTool to export certain configurations in the **Android Development Configurator (ADC)** and generate corresponding 1D/2D barcodes. With RK25's scans, all the required settings such as barcode reader, Wi-Fi, Terminal emulation, AppLock and more, are done in a matter of seconds.



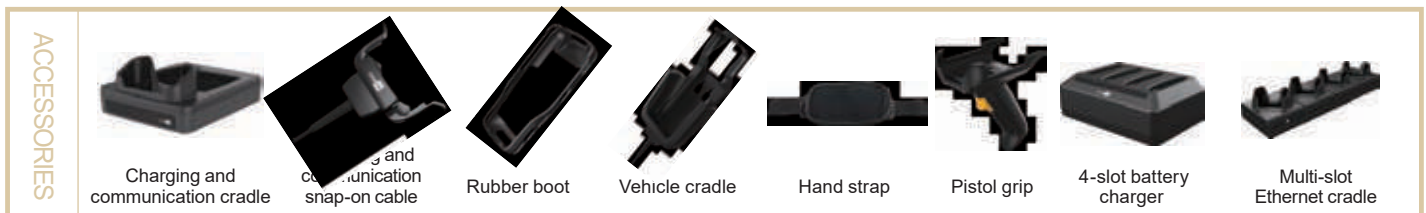
RK25 series

Rugged Mobile Computer



Performance	Operating system	Android 7 Nougat with GMS
	CPU	Quad-core 1.4 GHz Cortex A53
	Memory	2GB RAM / 16GB Flash
	Expansion	Micro SD card slot with SDHC support (up to 32GB)
	SIM / SAM	1 SIM slot and 1 optional SIM/SAM slot
	Operating power	Replaceable and rechargeable 3.8V, 4000 mAh Li-Polymer battery
	Working hours ¹	minimum 8 hours (2D imager)
	Alert	Tri-color LEDs, vibrator, speaker
Wireless communication	Interface supported	USB 2.0 OTG and charging contact
	WWAN ²	GSM: Quad Band (850/900/1800/1900Mhz) TD-SCDMA: Band34, Band39 WCDMA: Band1, Band2, Band5, Band8 TDD-LTE: Band38, Band39, Band40, Band41 FDD-LTE: Band1, Band2, Band3, Band5, Band7, Band8, Band20
	WLAN	IEEE 802.11 a/b/g/n/ac/d/h/i/k/r/l/e
	WLAN security	WPA, WPA2, WEP, TKIP, AES, PEAP, TTLS, TLS, PWD, SIM
	WPAN	Bluetooth® Class II, V4.0 BLE, V2.1 with Enhanced Data Rate (EDR)
	Bluetooth® profile	GAP, SDP, HSP, SPP, GOEP, OPP, HFP, PAN, A2DP, AVRCP, GAVDP, HID, PBAP
	GPS ³	GPS, Galileo, GLONASS, BeiDou, AGPS
	Barcode scanning	Linear imager / 2D imager / Mid-Range 2D imager
Data capture	RFID (Optional) ³	HF RFID 13.56 MHz frequency which supports ISO14443 TYPE A,B, and ISO15693 Support NFC (Peer-to-Peer, Card Reader, Card Emulation)
	Camera (Optional)	Autofocus 8 megapixels with LED flash
	Display	4" WVGA 480 (W) x 800 (H), Corning Gorilla Glass, TN LCD
Physical characteristics	Touch panel	Capacitive touch with stylus, bare fingertip, and gloved fingertip inputs
	Interactive Sensor Technology	Accelerometer, Light sensor, proximity sensor, e-compass, Gyroscope
	Keypad	25-key/28-key numeric keypads with assignable keys, volume up and down keys, left and right trigger keys, power key
	Audio	Speaker, dual array microphones with echo and noise cancellation
	Size (LxWxH)	168 x 73.8 x 26 mm
	Weight	292 g (2D imager with battery)
User environment	Operating temperature	-20°C to 50°C / -4°F to 122°F
	Storage temperature	-30°C to 70°C / -22°F to 158°F
	Humidity (non-condensed)	Operating 10% to 90% / Storage 5% to 95%
	Impact resistance	Standard: 1.5 m (5 ft.) multiple drops onto concrete, With rubber boot: 1.8 m (6 ft.) MIL-STD-810G IP65 / 300 tumbles at 0.5 m
	Electrostatic discharge	± 15 kV air discharge, ± 8 kV contact discharge
	Regulatory compliance	CE, NCC, CCC, SRRC, ANATEL, BIS, WPC RoHS, REACH, WEEE, ErP, China RoHS
Accessories	Standard	Hand strap, Charging and communication cradle, Charging and communication snap-on cable, Pistol grip, Rubber boot, Vehicle cradle, 4-slot battery charger, UHF RFID reader
	On request	Multi-slot Ethernet cradle
Development support		Android SDK, reader API, SAM API, HTML 5 API
Application software		CipherLab: Reader Configuration, Button Assignment, Wireless Mobile Deployment System (WMDS), Android Deployment Configurator (ADC) & BarcodeToSetting, Software Trigger, Terminal Emulation, App-Lock, Airlock Browser, Signature Capture, HF RFID Configuration Third party: SOTI (generic version), Xamarin Binding
Warranty		1 year

- Minimum 8 hours under WLAN and 2D scanning per 20 seconds, LCD 50% backlight and speaker on (volume is default) at 25°C, RFID off / Bluetooth® off / IEEE 802.11 a/b/g/n/ac on. The test is based on one broadcasting packet per second.
- The mobile computer has received general telecommunication certification for data communication. Please check with your local carrier for the optimum operating efficiency.
- GPS function is only available for WWAN models, and NFC is optional for only 28-key models.



Phone: 1300 800 999
Email: sales@barcodes.com.au
Website: www.barcodes.com.au

For more information, please visit us on <https://www.barcodes.com.au/cipherlab-rk25-rugged-mobile-computer/> or call us on 1300 800 999.